



## NKC

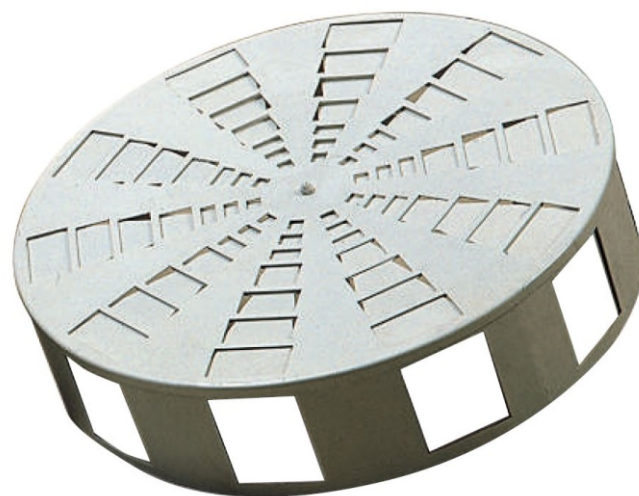
**Nawiewnik komfortu ciepłego,  
przestawny, dalekiego zasięgu**

### Przeznaczenie:

Nawiewniki komfortu ciepłego NKC przeznaczone są do zastosowań w instalacjach wentylacyjnych nisko i średniociśnieniowych. Stosowane są najczęściej w instalacjach przemysłowych, gdzie występuje zapotrzebowanie na nawiew ciepłego powietrza z dużych wysokości.

## Opis produktu

Nawiewniki komfortu ciepłego typu NKC o zmiennej geometrii idealnie nadają się do pomieszczeń o wysokości powyżej 3,8 m, np.: centrów handlowych, lotnisk, teatrów, banków, budynków użyteczności publicznej itp. Dzięki swojej konstrukcji i strukturze zapewniają skuteczną dystrybucję powietrza i niski poziom hałasu. Idealnie sprawdzają się dla nawiewu ciepłego powietrza z dużych wysokości.



## Cechy produktu

- Regulowany kierunek nawiewu powietrza (grzanie, chłodzenie)
- Akcesoria: skrzynka rozprężna, siłownik elektryczny
- Materiał: stal
- Wykończenie: malowanie elektrostatyczną powłoką proszkową w dowolnym kolorze RAL

# NKC

Nawiewnik komfortu cieplnego,  
przestawny, dalekiego zasięgu

## Informacje o produkcji

Comfort diffusers are controlled by manually or servo actuator and they are used for heating and cooling large spaces.

At cooling mode, airstream must be at horizontal position. Airstream of heating mode must be vertical position position to have max. influence depth at high velocities. Comfort diffusers meet the both heating and cooling requirements.

Diffusers made of air inlet neck, inner and outer diffuser casing. There are air outlets at bottom and side surfaces of diffuser. At heating mode, outlets of side surface will be closed so that, airstream has a vertical direction. By this way, effective heating will be occurred at target area. At cooling mode, outlets at bottom surface will be closed. So that, airstream has a horizontal direction. By this way, cooling will be effectively occurred at target area.

In addition to this, flow rate can be adjustable by the help of controlled which is mounted in the plenum box.

Different target areas which have different temperature will be prevented, by the help of quickly decreasing the thermal differences. So that, the warm air could rapidly blown whole target area. By the help of short periods of heating, economize energy consumption. When air direction changed horizontal to vertical, pressure loss and sound level will be constant.

### MATERIAL:

Comfort diffusers are made from galvanized sheet metal. It can be painted to any colour which can be chosen from RAL catalogue.

### MOUNTING:

It can be used with plenum box. Flow rate can be easily adjustable by the help of damper which is mounted in the plenum box.

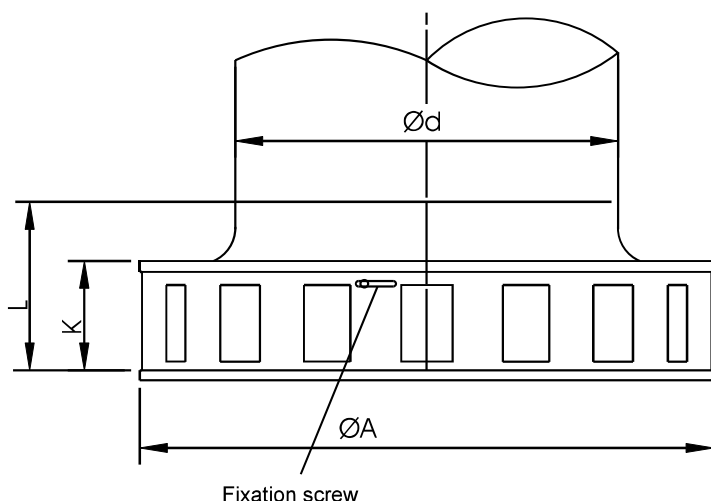
Size	300	400	500	600	800
Min. ceiling height (m)	3	3	4	5	5
V <sub>min.</sub> (m <sup>3</sup> /h)	200	300	400	500	800
V <sub>max.</sub> (m <sup>3</sup> /h)	1000	2000	2500	4000	7000

## NKC

Nawiewnik komfortu ciepłego,  
przestawny, dalekiego zasięgu

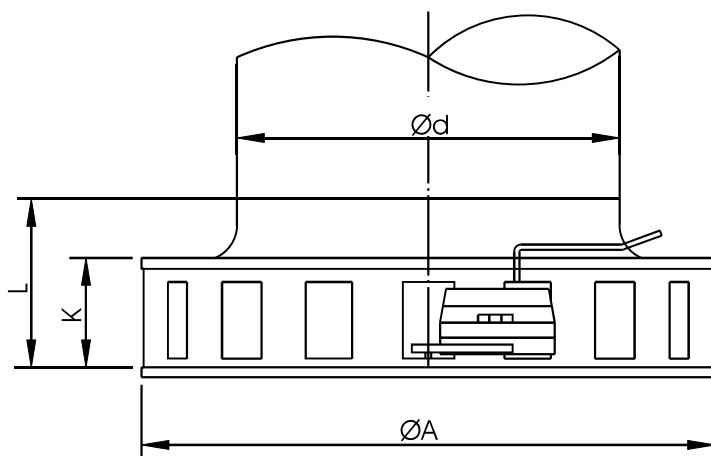
### Dane techniczne

Controlling comfort diffuser with manually



Outer casing can be fixed by the screw which is mounted on the side surface of the diffuser. If nothing is described while ordering, the diffuser will be adjusted to horizontal airstream position. Of course the position of outlets can be readjustable later.

Controlling comfort diffuser with servo actuator



Outer position can be changed by the help of electrical actuator.  
Voltage: 24 V(AC)  
Work range: 2-10 V= (0-20V phase)  
Length of actuator's cable: ca.0,9 m

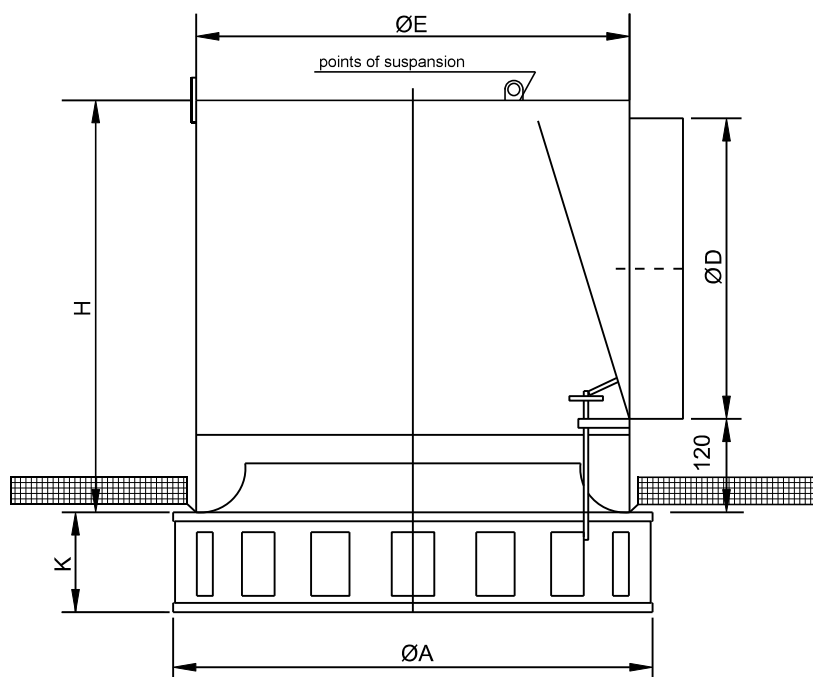
Side	ØA	Ød	L	K
300	302	180	144	79
400	402	250	178	98
500	502	315	200	120
600	602	400	221	136
800	802	500	310	185

## NKC

Nawiewnik komfortu ciepłego,  
przestawny, dalekiego zasięgu

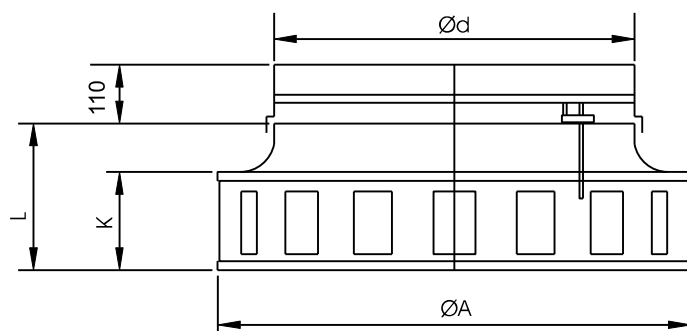
### Dane techniczne

Comfort diffuser with plenum box.



Plenum box, which is made from galvanized sheet metal, will be mounted to the diffuser by 4 screws.  
The sleeve which is mounted to the plenum box, can be adjustable from bottom.  
CW- close  
CCW- open

Comfort diffuser with valve



Adjustable sleeve mounted and fixed to the plenum box and can be adjustable from bottom.  
CW- close  
CCW- open

Ebat	ØA	Ød	L	K	ØE	ØD	H
300	302	180	144	79	260	178	330
400	402	250	178	98	360	248	400
500	502	315	200	120	460	313	465
600	602	400	221	136	560	398	550
800	802	500	310	185	725	498	650

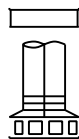
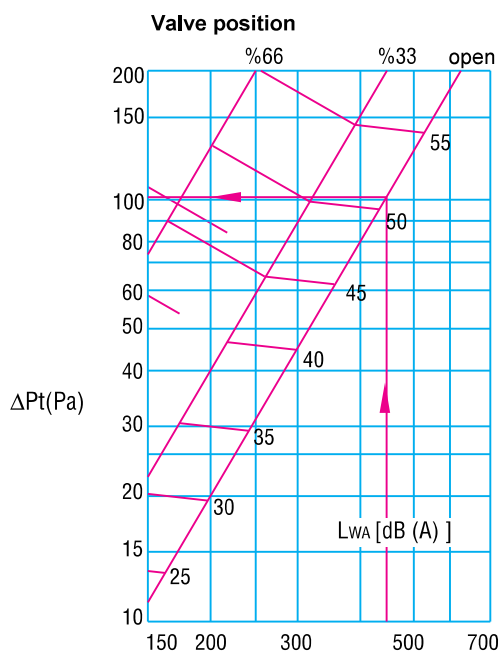
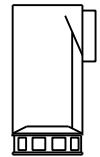
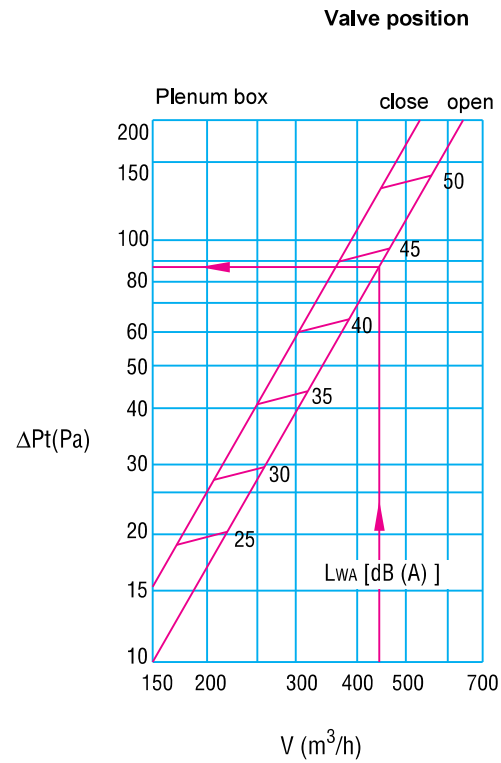
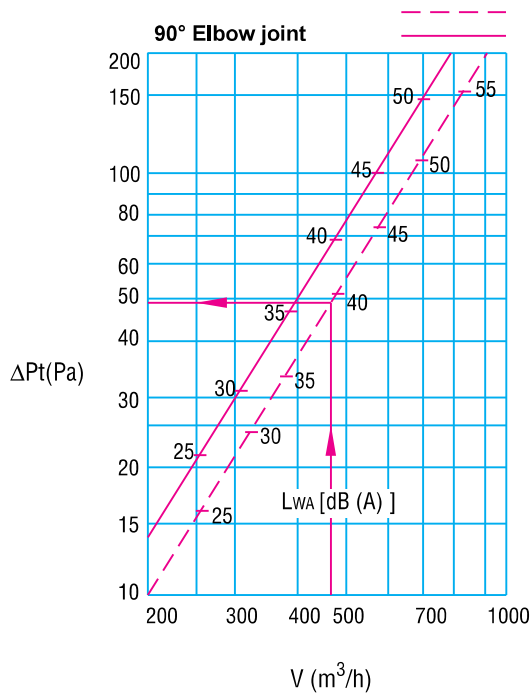
## NKC

Nawiewnik komfortu cieplnego,  
przełączalny, dalekiego zasięgu

## Szybki dobór

TYPE 300

Pressure loss and sound level



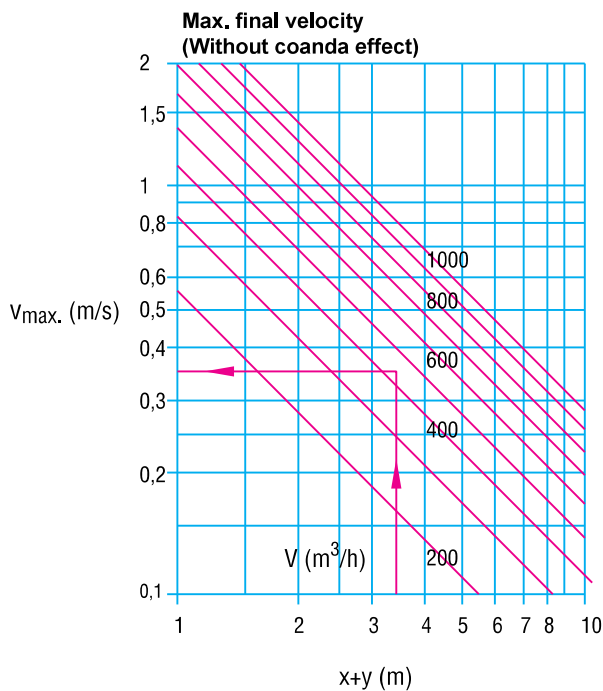
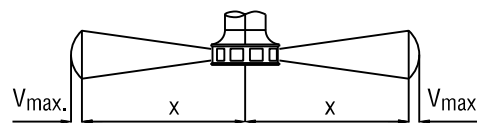
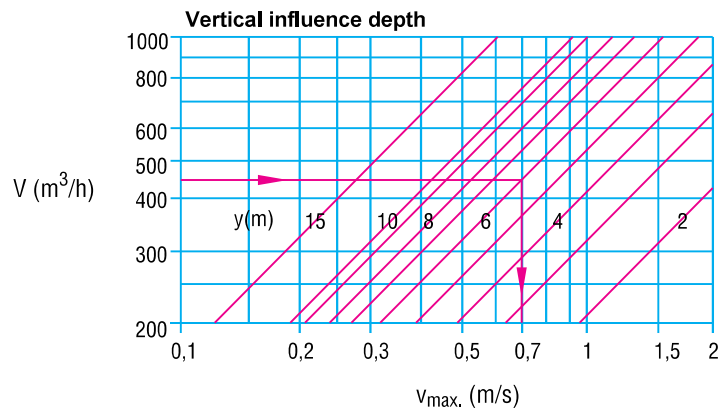
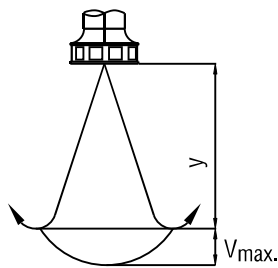
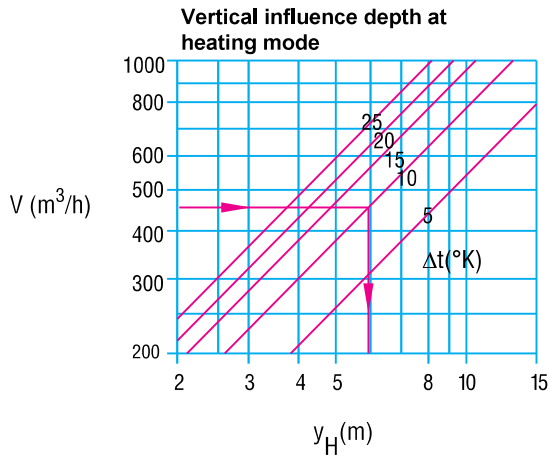
V (m³/h) : Flow rate  
 $\Delta P_t$  (Pa) : Pressure loss  
 $L_{WA}$  [dB(A)] : Sound level

## NKC

Nawiewnik komfortu cieplnego,  
przystawny, dalekiego zasięgu

## Szybki dobór

### TYPE 300



- $V_{max}$  (m/s) : Max. flow rate
- $x$  (m) : Horizontal airstream
- $y$  (m) : Vertical airstream
- $V$  (m<sup>3</sup>/h) : Flow rate
- $\Delta_t$  (°K) : Temperature difference
- $y_H$  (m) : Max. influence depth (heating mode)

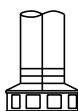
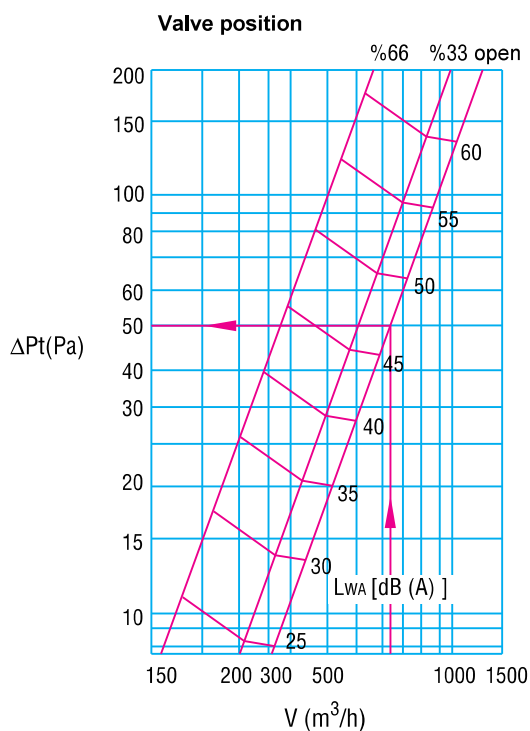
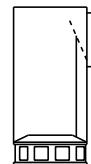
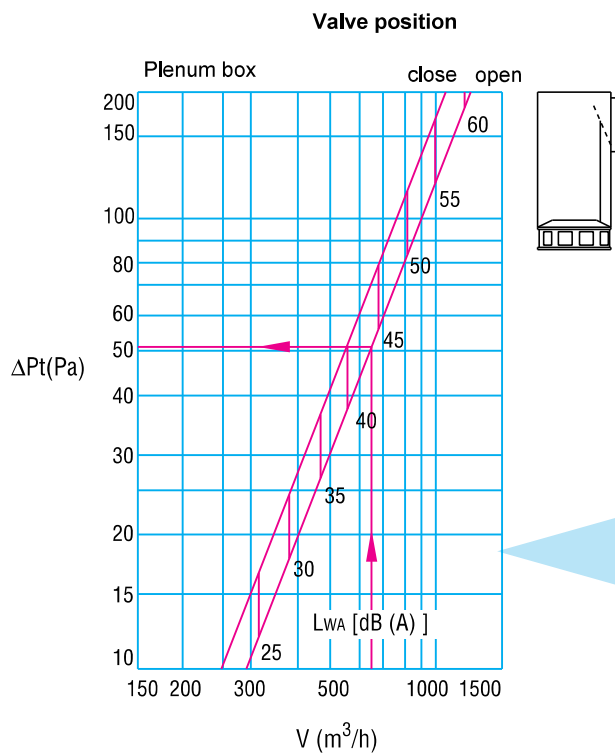
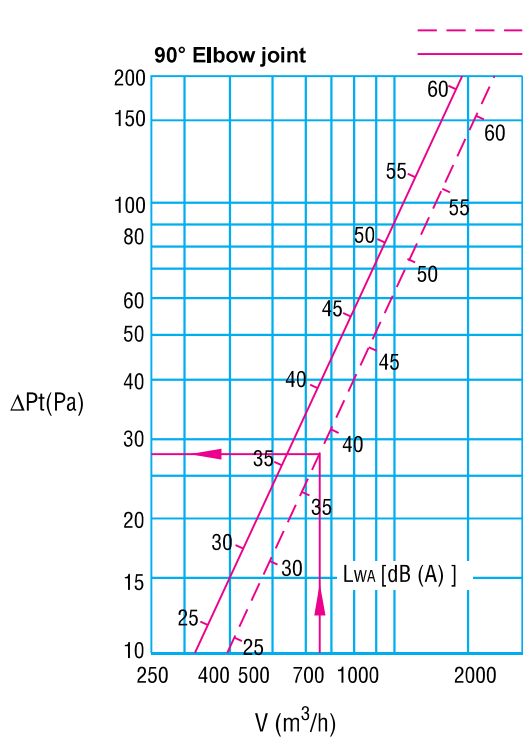
## NKC

Nawiewnik komfortu cieplnego,  
przełączalny, dalekiego zasięgu

## Szybki dobór

TYPE 400

Pressure loss and sound level



$V$  (m<sup>3</sup>/h) : Flow rate  
 $\Delta Pt$  (Pa) : Pressure loss  
 $L_{WA}$  [dB(A)] : Sound level

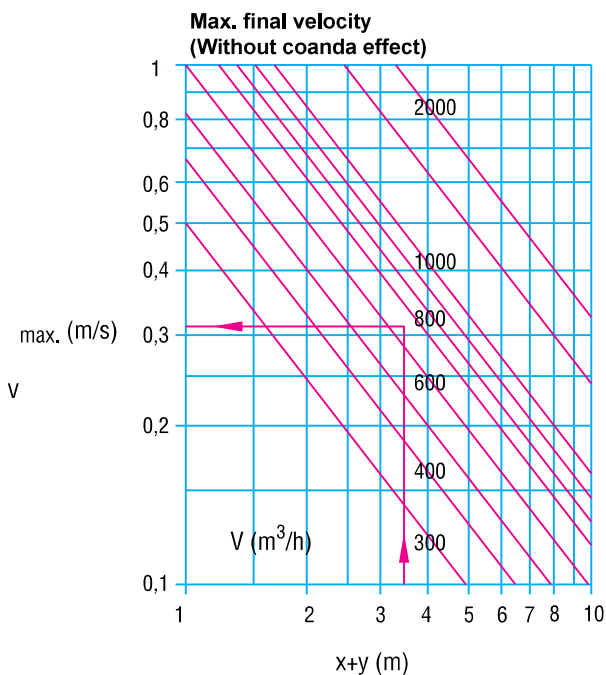
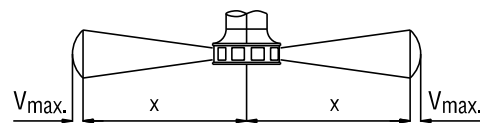
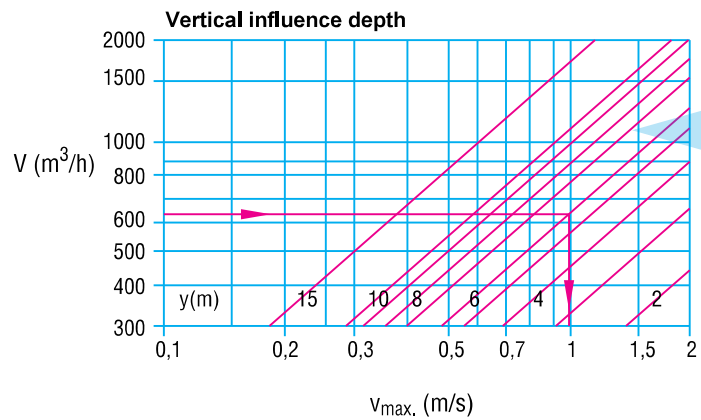
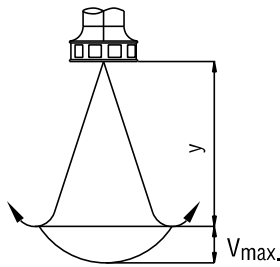
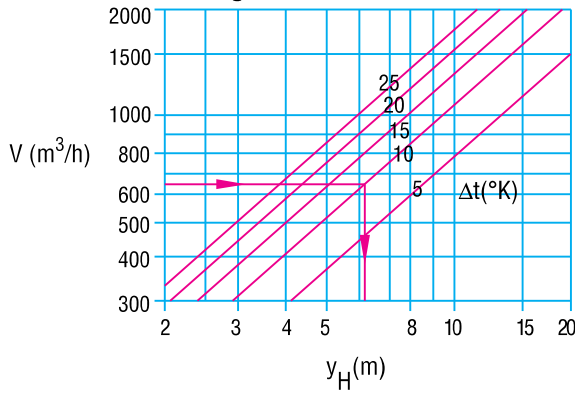
## NKC

Nawiewnik komfortu cieplnego,  
przystawny, dalekiego zasięgu

## Szybki dobór

### TYPE 400

Vertical influence depth at heating mode



- $V_{max}$  (m/s) : Max. flow rate
- $x$  (m) : Horizontal airstream
- $y$  (m) : Vertical airstream
- $V$  (m<sup>3</sup>/h) : Flow rate
- $\Delta_t$  (°K) : Temperature difference
- $y_H$  (m) : Max. influence depth (heating mode)



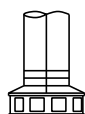
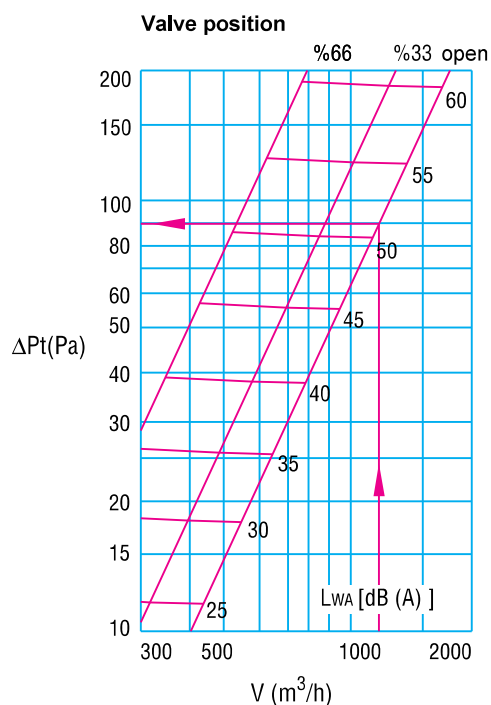
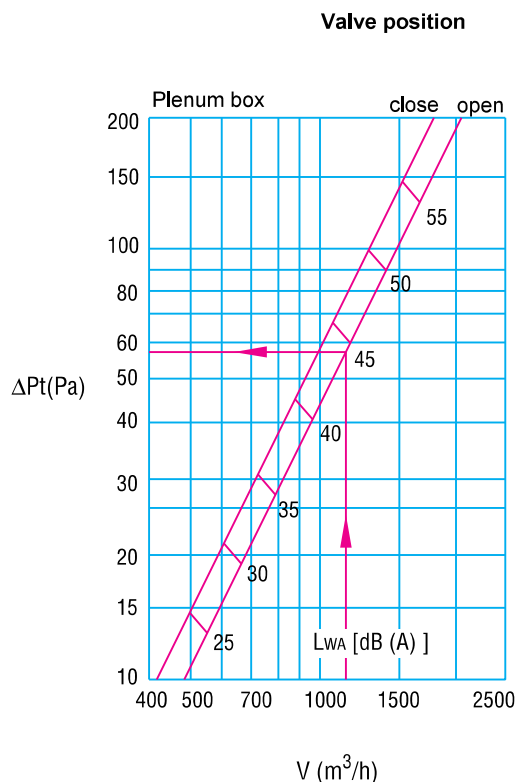
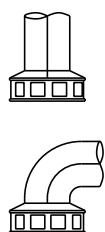
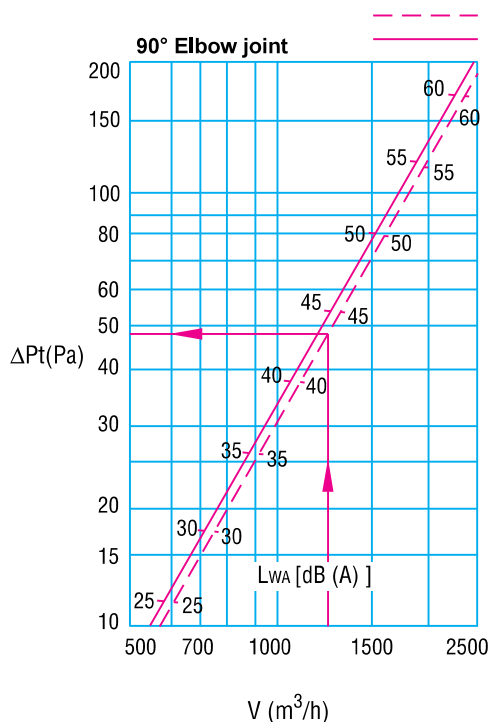
## NKC

Nawiewnik komfortu cieplnego,  
przystawny, dalekiego zasięgu

## Szybki dobór

TYPE 500

Pressure loss and sound level

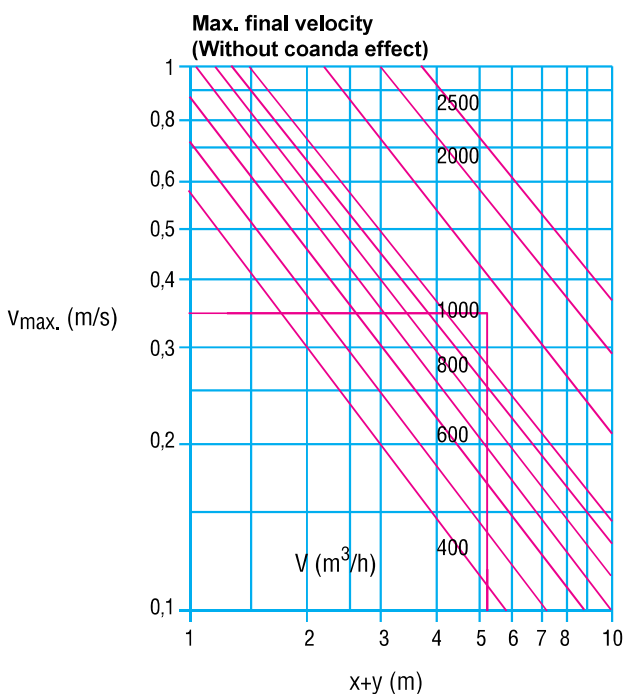
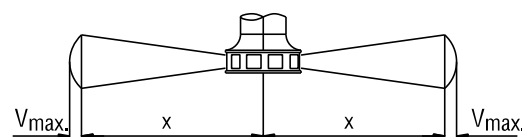
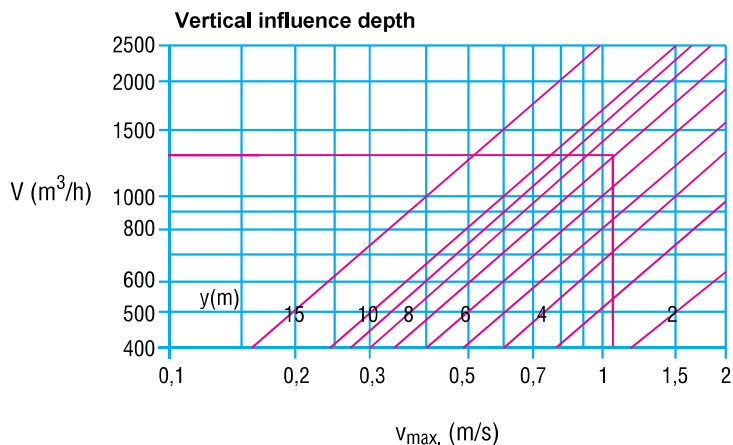
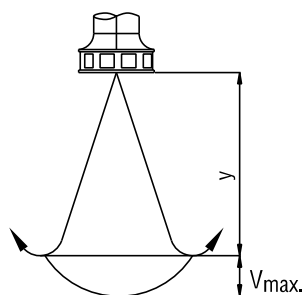
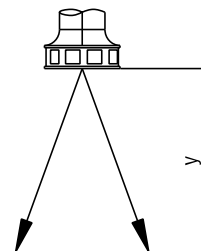
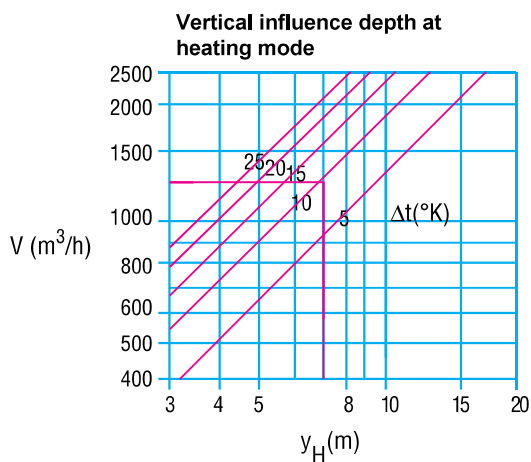


V (m<sup>3</sup>/h) : Flow rate  
 Δ<sub>Pt</sub> (Pa) : Pressure loss  
 L<sub>WA</sub> [dB(A)] : Sound level

## NKC

Nawiewnik komfortu cieplnego,  
przystawny, dalekiego zasięgu

## Szybki dobór



- $V_{max}$  (m/s) : Max. flow rate
- $x$  (m) : Horizontal airstream
- $y$  (m) : Vertical airstream
- $V$  ( $m^3/h$ ) : Flow rate
- $\Delta t$  ( $^{\circ}K$ ) : Temperature difference
- $y_H$  (m) : Max. influence depth (heating mode)

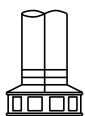
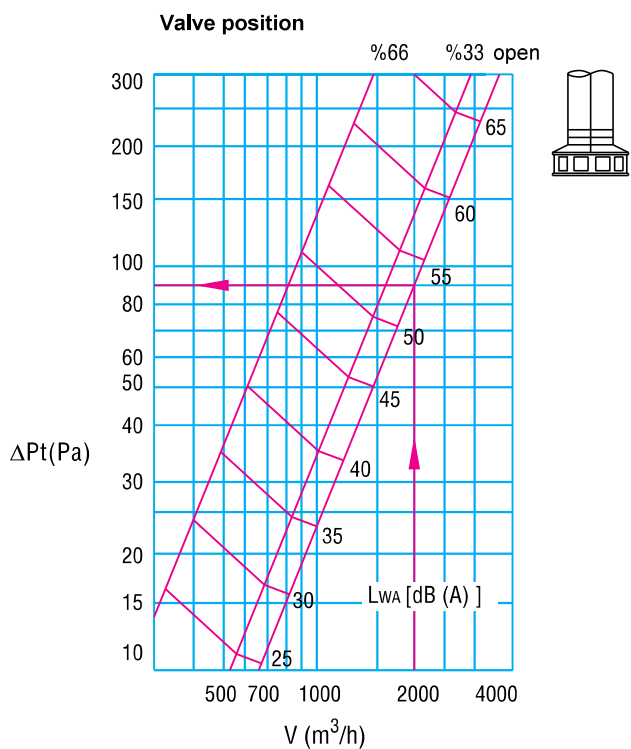
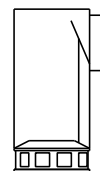
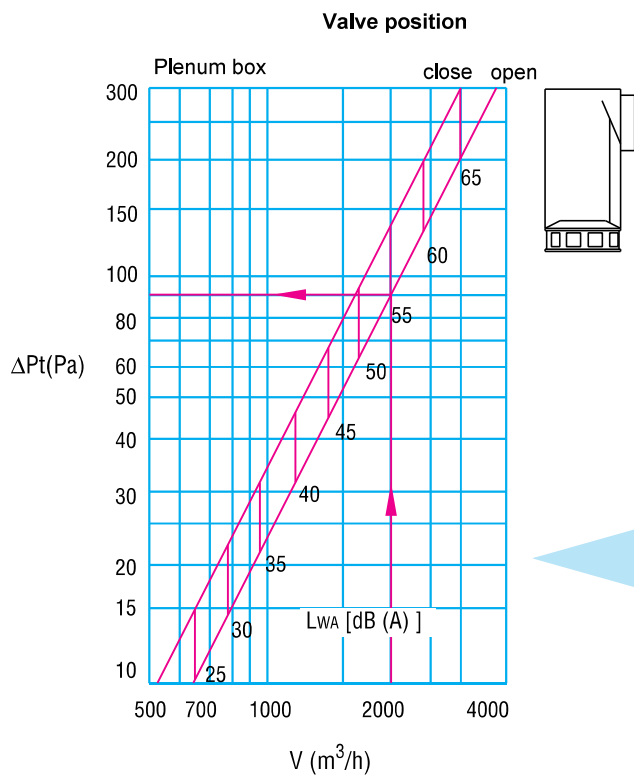
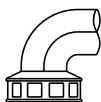
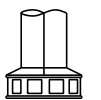
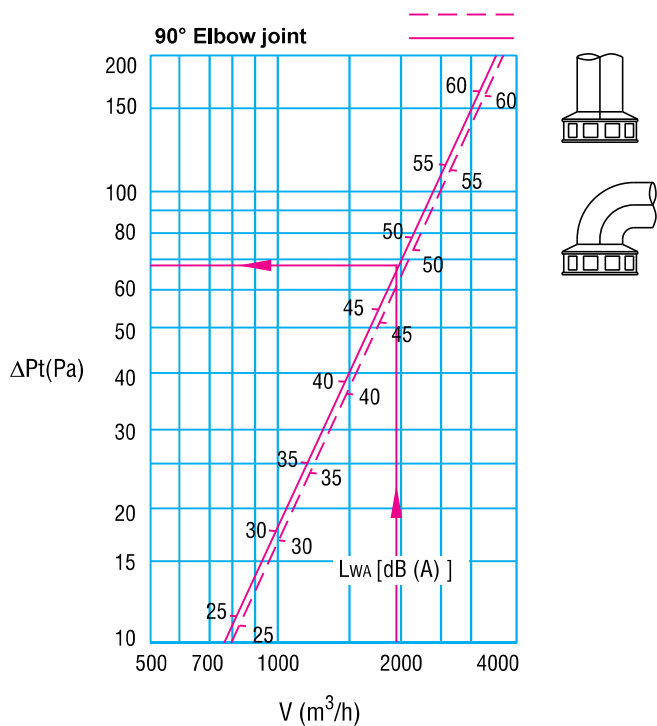
## NKC

Nawiewnik komfortu cieplnego,  
przełączalny, dalekiego zasięgu

## Szybki dobór

TYPE 600

Pressure loss and sound level



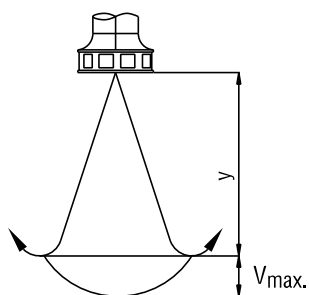
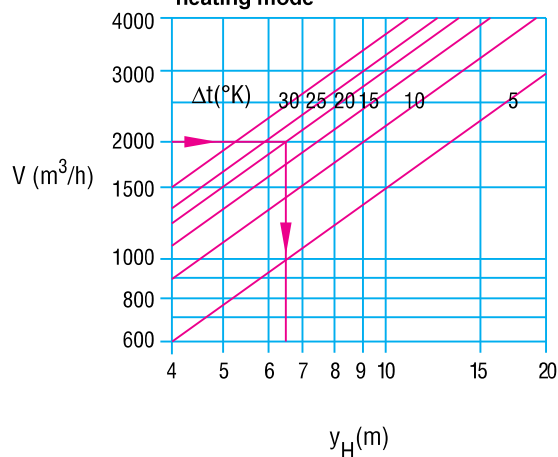
V (m³/h) : Flow rate  
 ΔPt (Pa) : Pressure loss  
 LWA [dB(A)] : Sound level

## NKC

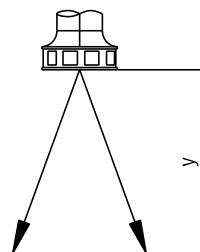
Nawiewnik komfortu cieplnego,  
przystawny, dalekiego zasięgu

### TYPE 600

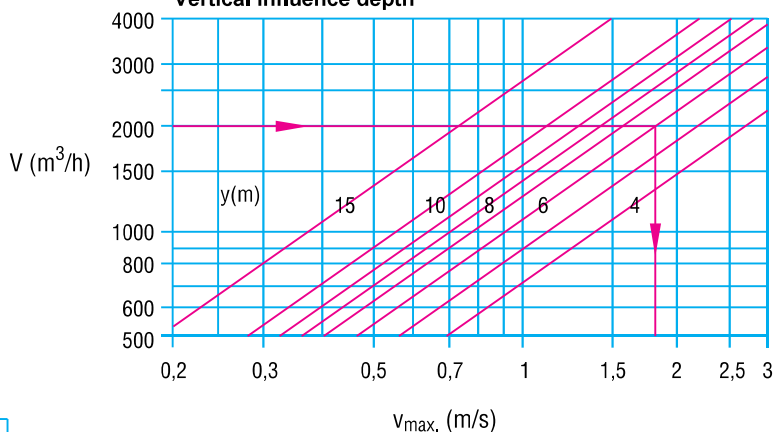
Vertical influence depth at heating mode



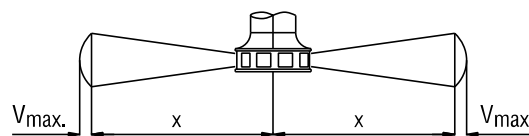
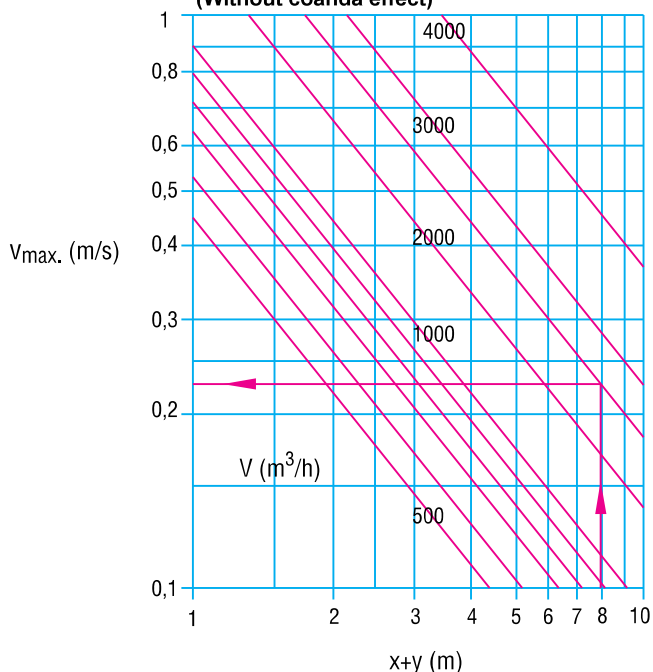
### Szybki dobór



Vertical influence depth



Max. final velocity (Without coanda effect)



- $V_{max}$  (m/s) : Max. flow rate
- $x$  (m) : Horizontal airstream
- $y$  (m) : Vertical airstream
- $V$  (m<sup>3</sup>/h) : Flow rate
- $\Delta_t$  (°K) : Temperature difference
- $y_H$  (m) : Max. influence depth (heating mode)

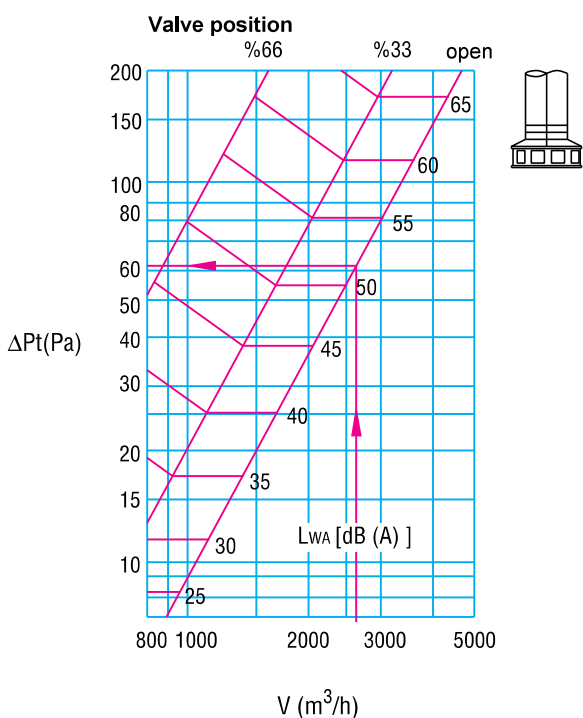
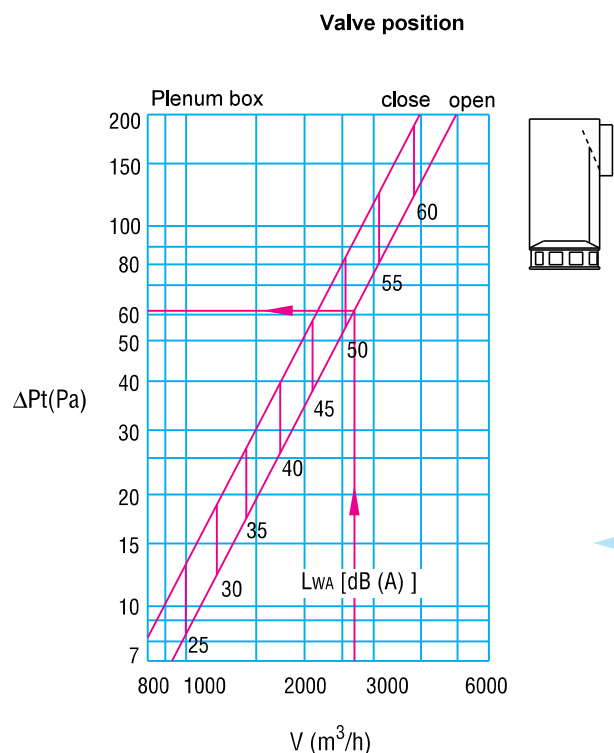
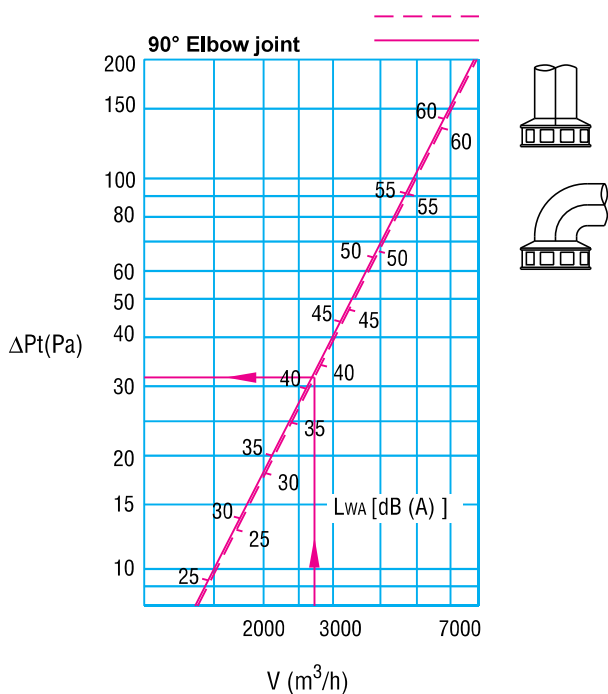
## NKC

Nawiewnik komfortu cieplnego,  
przełączalny, dalekiego zasięgu

## Szybki dobór

TYPE 600

Pressure loss and sound level



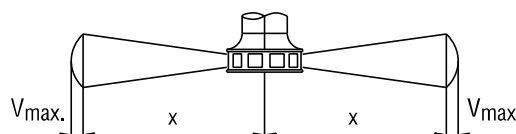
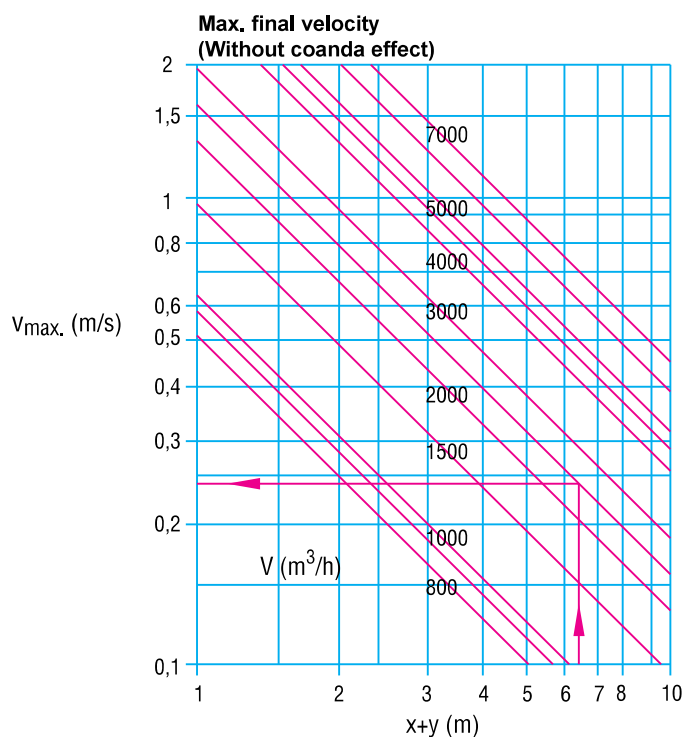
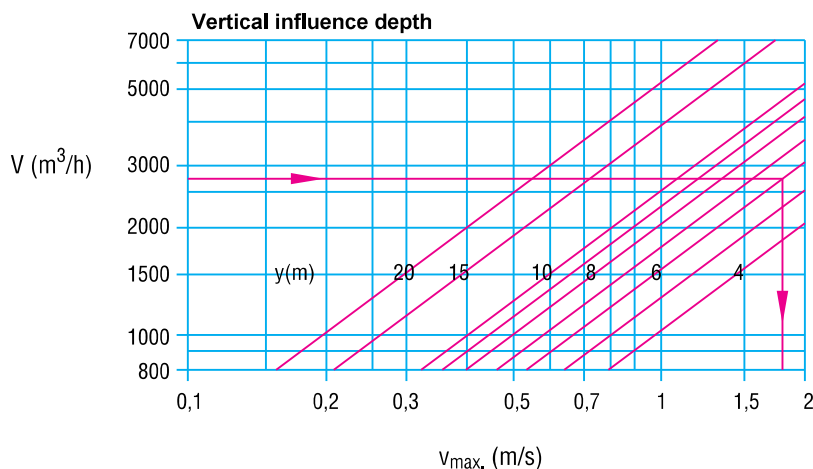
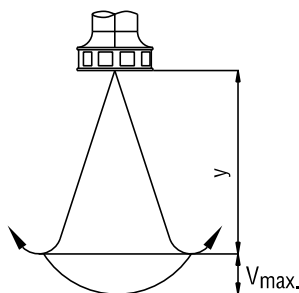
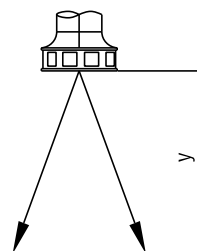
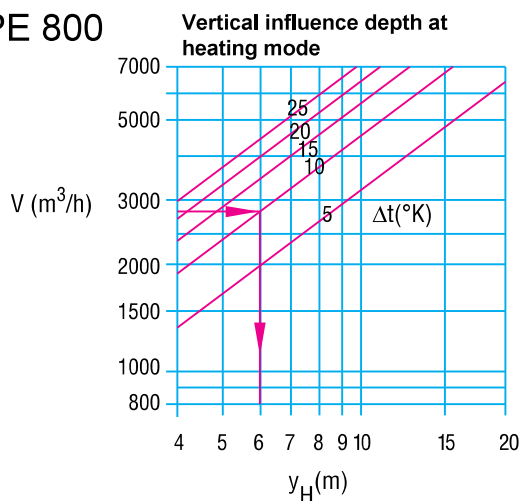
V (m<sup>3</sup>/h) : Flow rate  
 $\Delta_{Pt}$  (Pa) : Pressure loss  
 L<sub>WA</sub> [dB(A)] : Sound level

## NKC

Nawiewnik komfortu cieplnego,  
przystawny, dalekiego zasięgu

## Szybki dobór

### TYPE 800



- $V_{max}$  (m/s) : Max. flow rate
- $x$  (m) : Horizontal airstream
- $y$  (m) : Vertical airstream
- $V$  (m<sup>3</sup>/h) : Flow rate
- $\Delta_t$  (°K) : Temperature difference
- $y_H$  (m) : Max. influence depth (heating mode)



## NKC

Nawiewnik komfortu ciepłego,  
przestawny, dalekiego zasięgu

## Kod zamówienia

**NKC-BBB-CCC-DDDD-E-FFF**

A: symbol nawiewnika

BBB: wymiar nawiewnika [mm]

CCC: kolor z palety RAL

DDDD: skrzynka rozprężna

SR - skrzynka rozprężna

SRI - skrzynka rozprężna izolowana

SRP - skrzynka rozprężna z przepustnicą

SRIP - skrzynka rozprężna izolowana z przepustnicą

E: liczba króćców przyłączeniowych

FFF: średnica króćca (np. 123, 158, 198, 248, 298)